

"Fusion Line"

Speciality Welds Newsletter

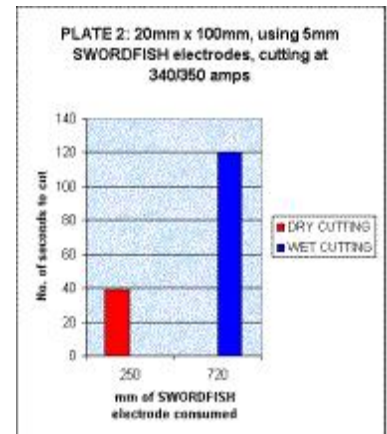
Spring-Summer 2004 Issue 15

Shell Trials on Swordfish now Completed

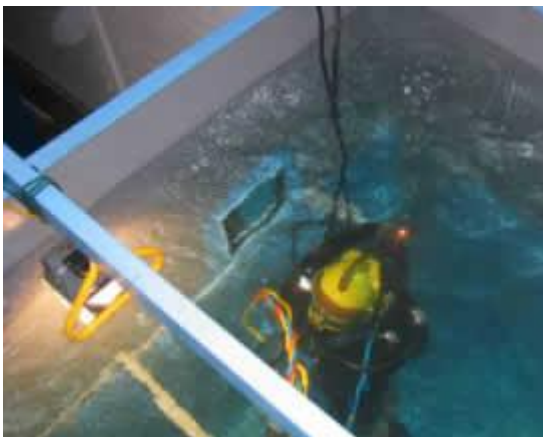
Following Shells sponsored trials on our Swordfish cutting electrodes, you can now download the evaluation report and user manual from our website. This report has been provided with the kind permission of Shell and provides clear evidence that Swordfish offers significant safety advantages in cutting over exothermic / oxy-arc methods. Swordfish electrodes are available in two sizes, 4.0 and 5.0mm and will provide a satisfactory alternative cutting method on a range of materials and thicknesses



without oxygen. The photo shows a 20mm steel section with the left cut carried out dry and the right, wet. The graph shows the increase in consumable and time required from dry to wet. Although this process cannot offer improvements in speed and efficiency over oxygen fuelled processes, where safety is of paramount concern it does offer a real alternative.



Anglian Marine's Divers Trained & Tested



Following a request by Anglian Marine to conduct training and testing for their dive team. We are happy to report all divers have been successful in their welder approval tests to BS 4872-1:1982. The training, which was conducted at their in-house facility, over a 5-day period, involved training and testing in MMA multipass fillet welds for both wet and dry welding. We also produced a full QA system in accordance with BSEN 729-4: 1995 to cover all quality requirements. In addition, pWPS specifications were written to cover all welding methods and techniques. For those interested in welding procedures and standards, please be advised of the

following changes to British/European welding standards and specifications.

BSEN 288-1: 1992, now replaced by BSEN 15607:2003

BSEN 288-3:1992 now replaced by BSEN ISO 15614-1:2004

BSEN 287-1:1992 now replaced with the 2004 edition.

Hammerhead Wet-Spot Trials Completed

Following our successful application for the DTI's SMART Award. We are please to advise our customers that the final feasibility report is nearing completion and will be made available on our website for direct down loading. We promise it makes for some interesting reading, and systems will be available to purchase later this year. Interested in a demo? Please call our sales office.

Moorlands Business Centre, Balme Road, Cleckheaton, West Yorkshire BD19 4EZ (UK)

Tel: +44 (0) 1274 879867 Fax: +44 (0) 1274 855975 Email: sales@specialwelds.com website: www.specialwelds.com